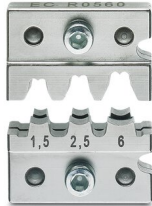


Crimp insert - CF 500/DIE SC 6

1212242

<https://www.phoenixcontact.com/us/products/1212242>

Please be informed that the data shown in this PDF document is generated from our Online Catalog. Please find the complete data in the user documentation. Our General Terms of Use for Downloads are valid.



Die for crimping machine CF 500, for slip-on sleeves and flat connectors (C-SCF... and C-SCM...)
) 0.5 ... 6 mm²

Commercial Data

Item number	1212242
Packing unit	1 pc
Minimum order quantity	1 pc
Sales Key	B15
Product Key	BH323Z
Catalog Page	Page 511 (C-3-2019)
GTIN	4046356450003
Weight per Piece (including packing)	73.6 g
Weight per Piece (excluding packing)	73 g
Customs tariff number	84799070
Country of origin	DE

Crimp insert - CF 500/DIE SC 6



1212242

<https://www.phoenixcontact.com/us/products/1212242>

Technical Data

Product properties

Product type	Die
Compression	B crimp
Min. cross section	0.5 mm ²
Max. cross section	6 mm ²

Connection data

Conductor connection

Cross section range, metric	0.5 mm ² ... 6 mm ²
-----------------------------	-------------------------------------------

Material specifications

Color	silver
-------	--------

Cable / line

External cable diameter	0.9 mm ... 2.9 mm
-------------------------	-------------------

Crimp insert - CF 500/DIE SC 6

1212242

<https://www.phoenixcontact.com/us/products/1212242>



Approvals



EAC

Approval ID: RU C-DE.AI30.B.01549

Crimp insert - CF 500/DIE SC 6



1212242

<https://www.phoenixcontact.com/us/products/1212242>

Classifications

ECLASS

ECLASS-9.0	17139201
ECLASS-11.0	17130192
ECLASS-10.0.1	17139201

ETIM

ETIM 8.0	EC002778
----------	----------

UNSPSC

UNSPSC 21.0	27111500
-------------	----------

Crimp insert - CF 500/DIE SC 6

1212242

<https://www.phoenixcontact.com/us/products/1212242>

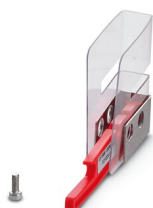


Accessories

Covering hood

Covering hood - CF 500/COV SC - 1212251

<https://www.phoenixcontact.com/us/products/1212251>

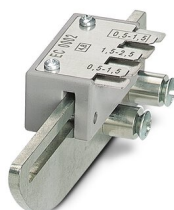


Protective cover for crimping machine CF 500, for flat sleeve connector and flat connector 0.1-6 mm², SC 1.5... and SC 6...

Crimp locator

Crimp locator - CF 500/LOC SCF 4,8/2,5 - 1212248

<https://www.phoenixcontact.com/us/products/1212248>



Sleeve receiver for CF 500 crimping machine, for slip-on sleeves (SCF 4,8...), 0.5 - 2.5 mm², width: 4.8 mm

Crimp insert - CF 500/DIE SC 6

1212242

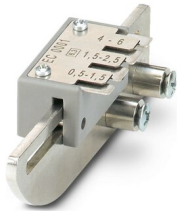
<https://www.phoenixcontact.com/us/products/1212242>



Crimp locator

Crimp locator - CF 500/LOC SCF 6,3/6 - 1212247

<https://www.phoenixcontact.com/us/products/1212247>

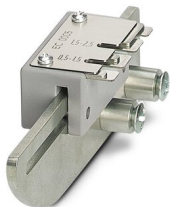


Sleeve receiver for CF 500 crimping machine, for slip-on sleeves (SCF 6,3...), 0.5 - 6 mm², width: 6.3 mm

Crimp locator

Crimp locator - CF 500/LOC SCM 6,3/2,5 - 1212264

<https://www.phoenixcontact.com/us/products/1212264>



Sleeve receiver for CF 500 crimping machine, for (SCM...) 0.5 - 2.5 mm flat plug, width: 6.3 mm

Crimp insert - CF 500/DIE SC 6

1212242

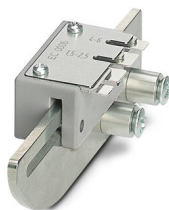
<https://www.phoenixcontact.com/us/products/1212242>



Crimp locator

Crimp locator - CF 500/LOC SCM 6,3/6 - 1212265

<https://www.phoenixcontact.com/us/products/1212265>



Sleeve receiver for CF 500 crimping machine, for (SCM...) 1.5 - 6 mm flat plug, width: 6.3 mm

Phoenix Contact 2022 © - all rights reserved

<https://www.phoenixcontact.com>

Phoenix Contact USA
586 Fulling Mill Road
Middletown, PA 17057, United States
(+717) 944-1300
info@phoenixcon.com